

# Installing an update of ICdoc

General.....	2
Backup.....	3
Backup of Oracle 8 database.....	3
Backup of Oracle 10 database.....	3
Installation of ICdoc.....	4
Version control and database update.....	10

# General

## Backup

Before you install a new version of ICdoc, you must backup your database first. Use the Oracle specific backup programs to backup the database.

## Administrator Logon

To be able to install ICdoc completely you must be registered for the operating systems Windows 2000, Windows XP or Windows Vista as user with administrator rights. If this is not the case please register again at the system. If you are a user without administrator rights let the application be installed by your responsible system administrator.

## Platform specific differences with the installation

For the operating systems Windows 2000, Windows XP and Windows Vista the below described mode of operation applies for starting the setup applications.

## Starting the installation

Be sure that the ICdoc-CD is in your CD-ROM disk drive. In case that the installation program does not start automatically after inserting the CD, you can start the programme INSTALL.EXE manually from the root directory of the CD.



## ICdoc-Update

Start the setup program for ICdoc with a click on the button "**Install ICdoc**". Please notice that the start of an application from a CD may be slower than you expect when working with your PC!

## **Backup**

Before you install a new version of ICdoc, you must backup your database first. Use the Oracle specific backup programs to backup the database.

### ***Backup of Oracle 8 database***

The backup of an Oracle 8 database is done by script. You can find a template for the backup script in "ICdoc\Bck". More information's about the backup scripts and how to configure them, depending on your environment, please read the instructions in "readme.txt".

If you have configured an automatic and daily backup of your database, you should check the procedure every time, you install an ICdoc update, to be sure that the backup scripts runs correctly every day.

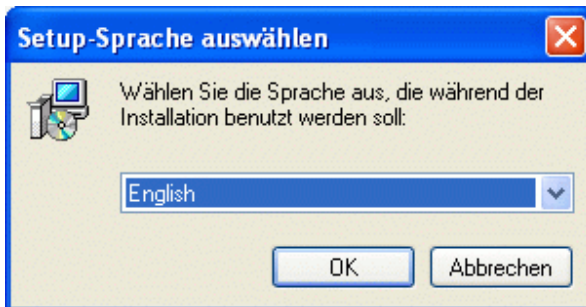
### ***Backup of Oracle 10 database***

The backup of an Oracle 10 database is done by the backup manager of Oracle. Please read the related documentation of Oracle.

**If you get into troubles during the installation of an ICdoc update please call our Technical Hotline: +43-664-3762981.**

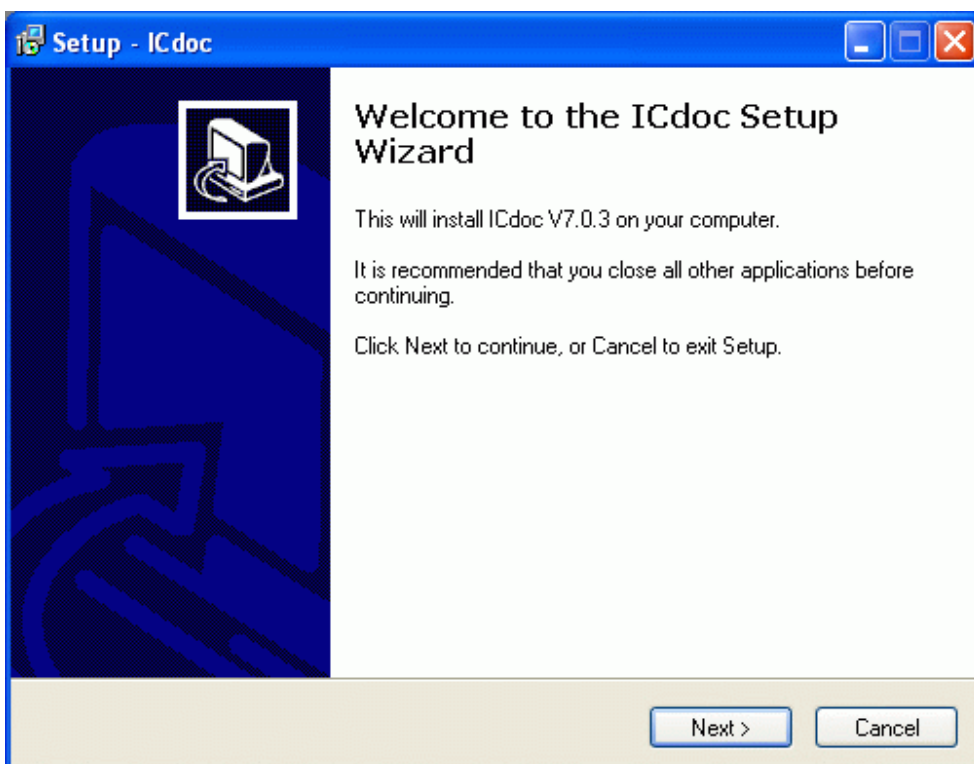
## Installation of ICdoc

Be sure that the ICdoc CD is in the CD-ROM drive. On installations via a network the installation program for ICdoc can also be started directly: You start the Windows Explorer and change to the root directory of the CD-ROM. Go to the ICdoc directory and start the program SETUP.EXE. During the start process of the setup program you may change the language if necessary.



*Language selection*

After the start the installation program is displayed, the setup assistant for ICdoc on the screen (Figure 1) and the following welcome screen appears. We recommend to terminate all other programs for the duration of the installation. Read the instructions on the screen and press the button "**Next**" to continue with the installation.



*Figure 1: Welcome*

Press the button "**Next**" (Figure 1) to start with the installation.

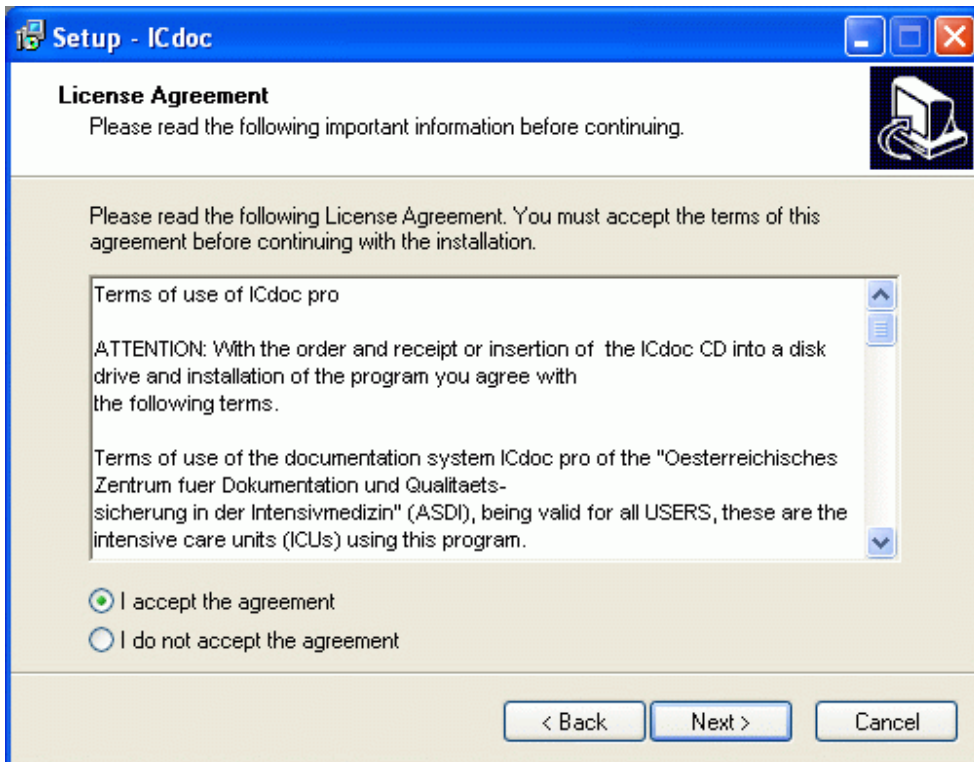


Figure 2: Licence agreement

Acknowledge the licence conditions (Figure 2) of the "Österreichische Gesellschaft für Dokumentation und Qualitätssicherung (ASDI)" with the button **"I accept the agreement"** and press the button **"Next"** to continue.

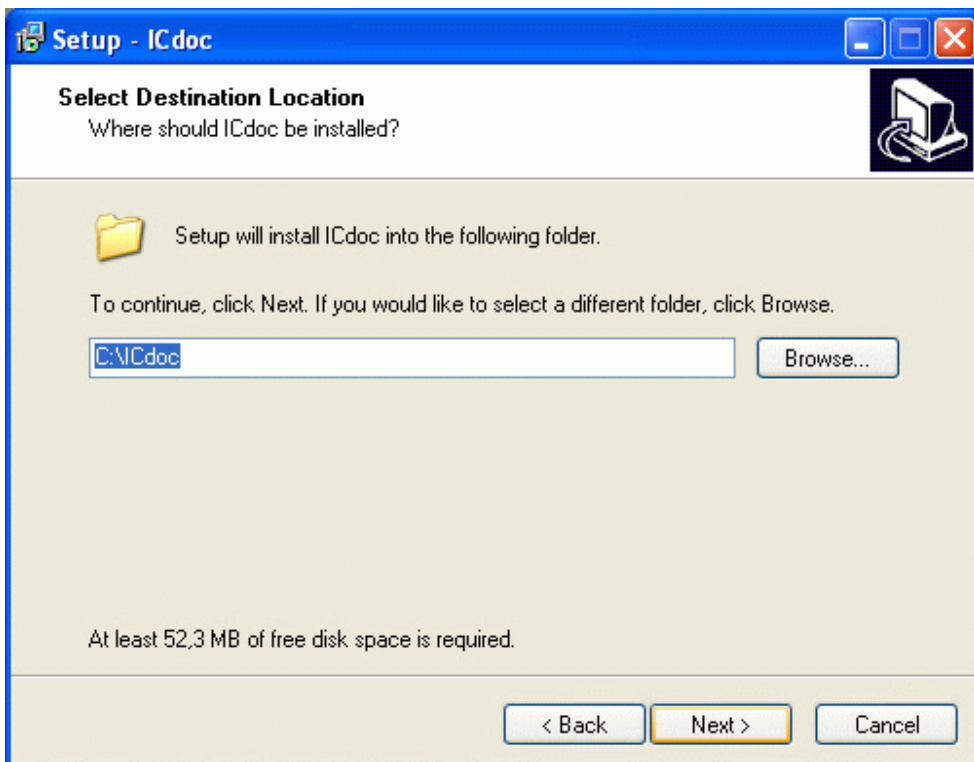


Figure 3: Select destination folders

If you want to install the application to another directory then you press the button '**Browse...**' and follow the instructions of the dialog. Confirm the directory the ICdoc application shall be installed to and press the button "**Next**" to continue with the installation.

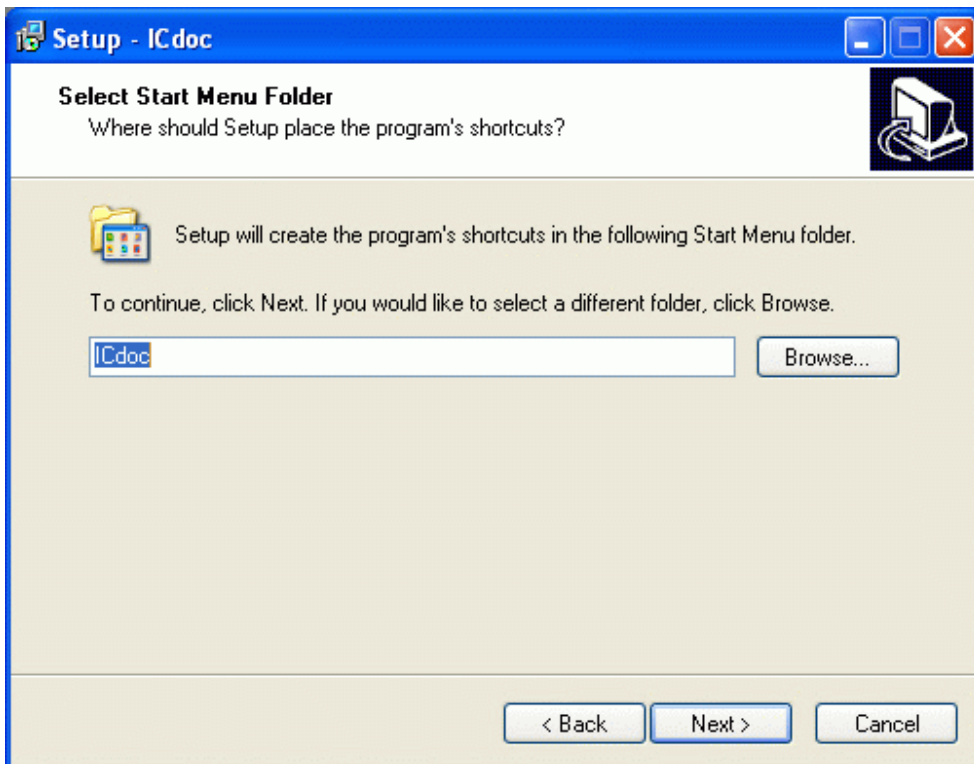


Figure 4: Select start menu folder

The setup program automatically adds icons to a program group chosen by you. Per default the program group is suggested to be 'ICdoc'. If you want to select a different program group you can enter a new name. Press the button "**Next**" to continue with the installation.

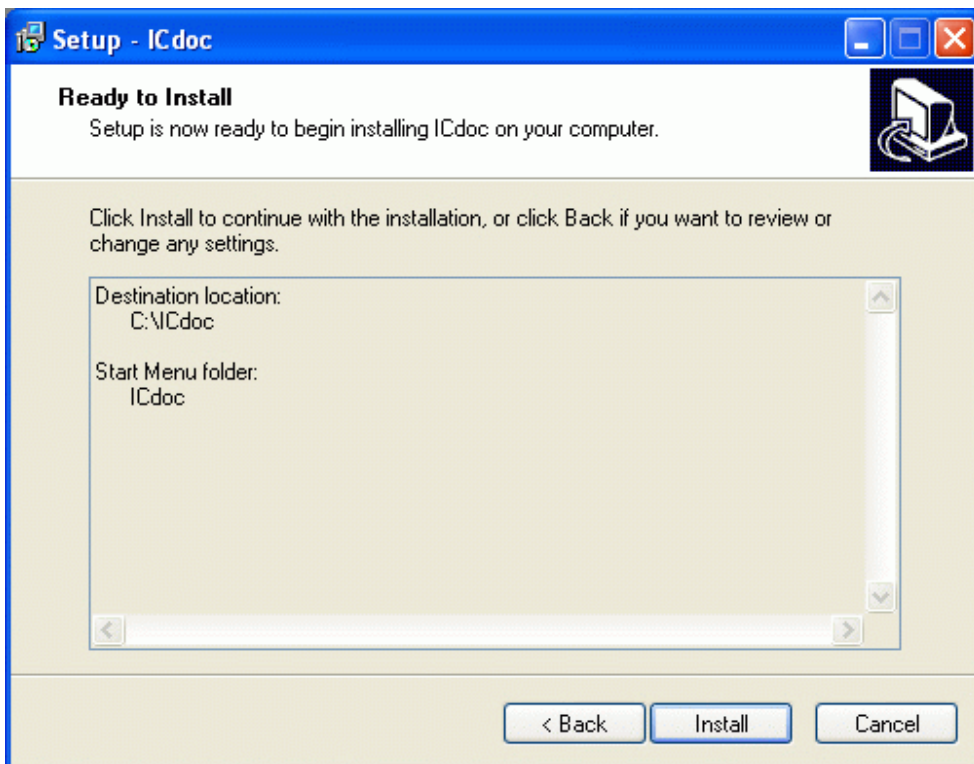


Figure 5: Carry out installation

The setup program now has enough information to begin with the installation of the ICdoc application. If you want to change a few options press the button "**Back**". Press the button "**Next**" to start with the installation of the files.

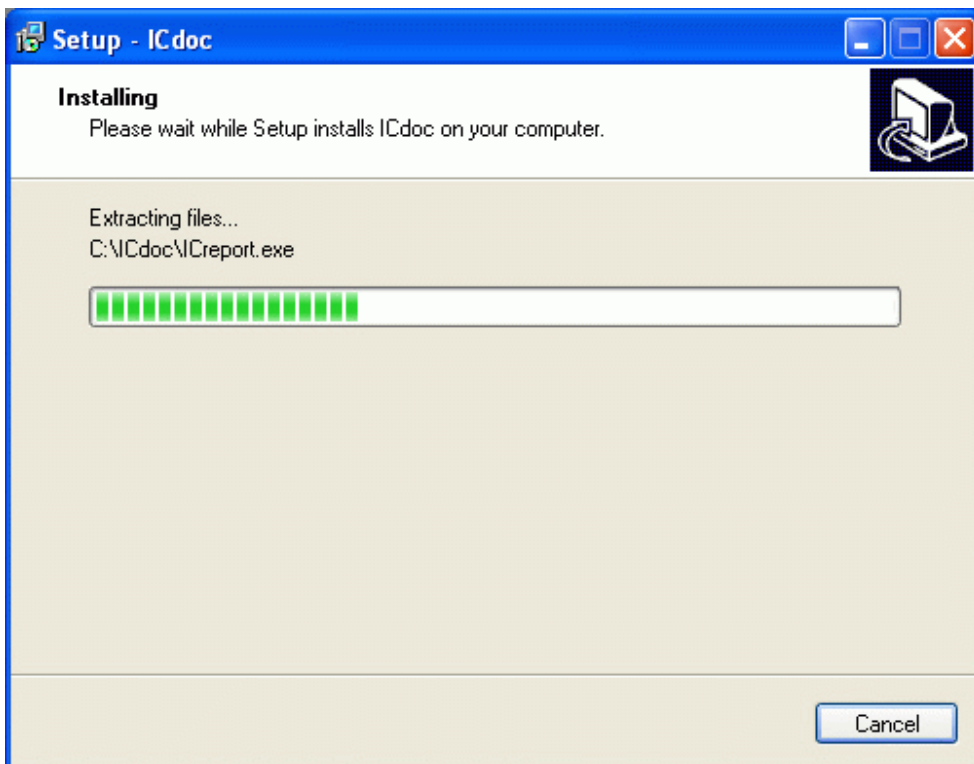
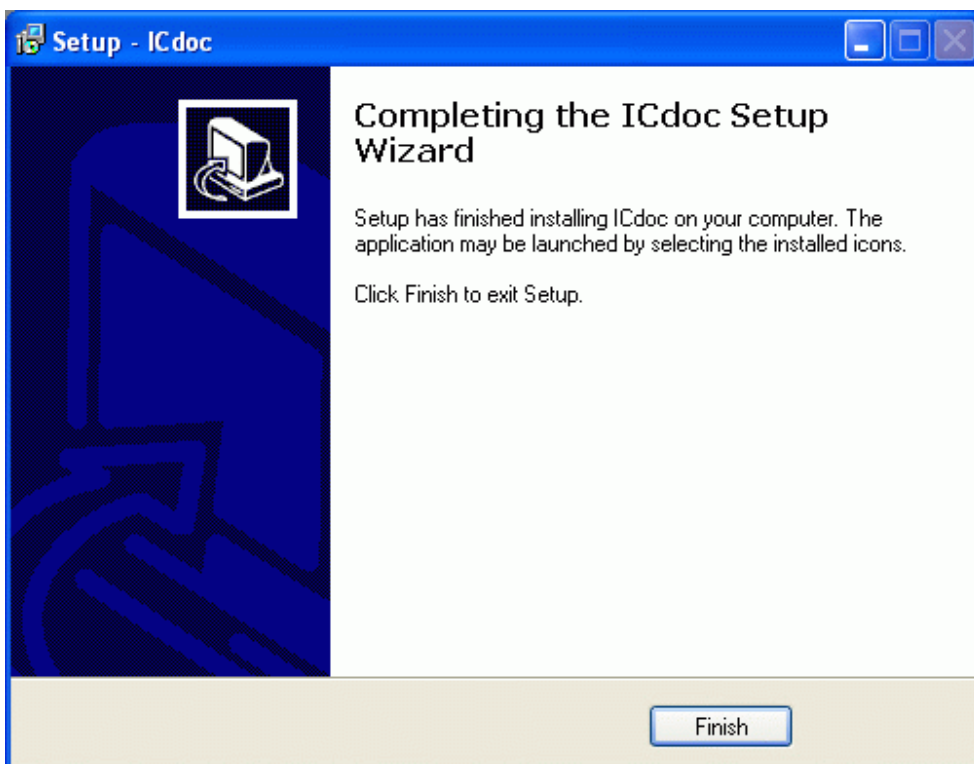


Figure 6: Setup ICdoc

While ICdoc is installed on your computer the bar at the lower screen border displays the actual status of the installation.





*Figure 7: Setup ICdoc finished*

After the installation of the ICdoc files the final dialog of the Install Shield Wizards is displayed (Figure 8). Press the button "**Finish**" to finish the installation.

Now you have successfully completed the installation and may start ICdoc or ICVerChk (only for the version control of ICdoc). After the start the [Login](#) is displayed; the operating instructions you can find in the [Instruction manual](#). With ICVerChk you do not need a password to carry out version control.

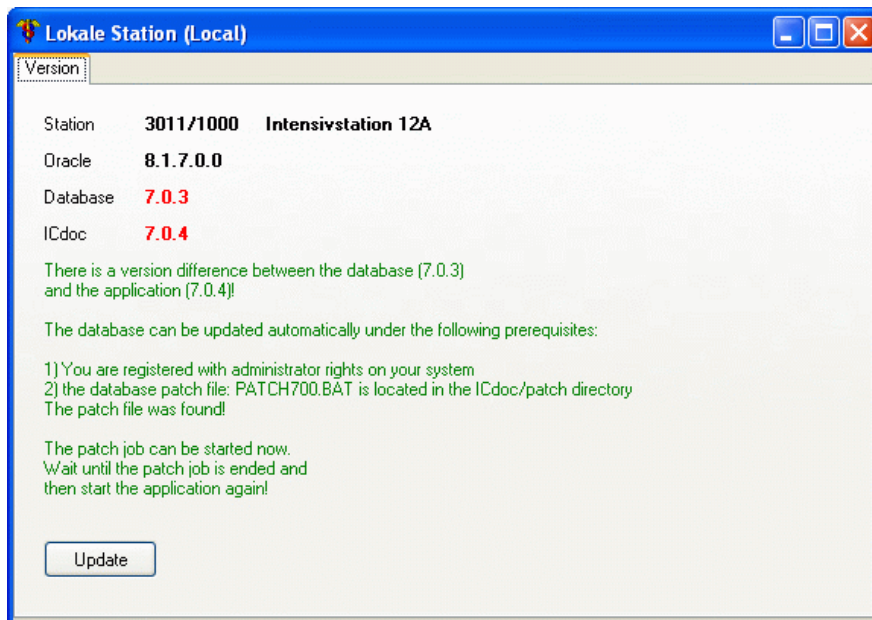
## Version control and database update

If you have carried out an upgrade of ICdoc or installed an ICdoc service pack (installation of a newer version of ICdoc over an older version) an update of the database has to be done also.

The realization of the update is carried out with the help of a patch file (e.g. patch200.bat). The version control (comparison of the versions of ICdoc and of the database) is performed **automatically after the start of ICdoc**. Instead of ICdoc the application **ICVerChk** also can be used for the version control. Unlike ICdoc this application does not ask for a password and was established for the supporting system administrators for the maintenance and care of ICdoc. If you are registered with administrator rights on your system ICdoc searches for the actual patch file. Activate the program with the button "**OK**" and wait until the patch job is finished. Start ICdoc once again to continue.

### Automatic version control at the start of ICdoc

Any time ICdoc is started the corresponding version of the database will be checked. If a difference in the releases is detected the following window appears, where you are summoned to update the database to the version level of ICdoc:



**Caution:** The update of the database can only be carried out under the prerequisite that the new ICdoc version is a direct following version of the former. If one or more versions have been skipped or the version of the database is newer than the one of ICdoc the database cannot be updated automatically. In this case you consult your system attendant or the technical Hotline of ICdoc.